

vtech®

Parent's Guide

Pop-a-balls™

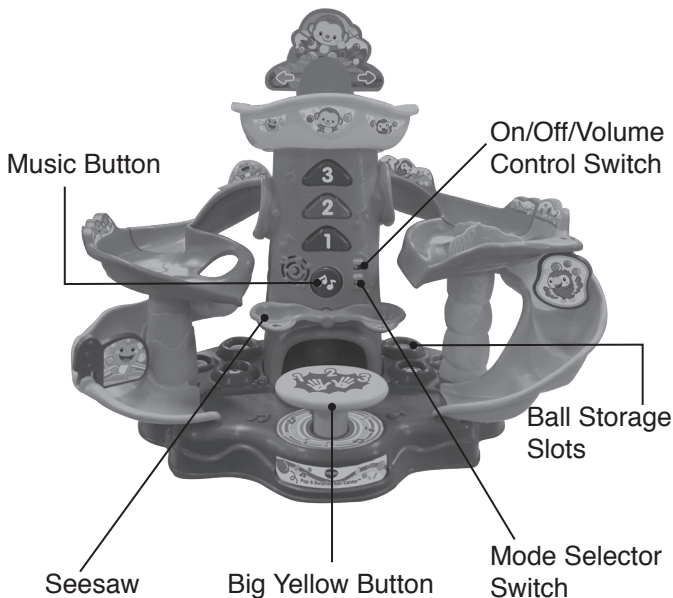
Pop & Surprise Ball Center™



91-003737-000 (US) (CA)

# INTRODUCTION

Thank you for purchasing the **VTech® Pop-a-Balls™ Pop & Surprise Ball Center™**. This interactive ball tower features colorful popping balls, twisting slides and cheerful animals that make playtime fun. Press the big yellow button to send the balls up the tower, where they'll pop out of three different locations and roll down the slides. This tower is great for seated or standing play, and is filled with ball popping fun!



# INCLUDED IN THIS PACKAGE



A. One support base



B. One electronic tower



C. One C-shaped lower track



D. One curved middle track



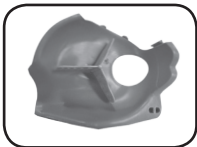
E. One curved upper track



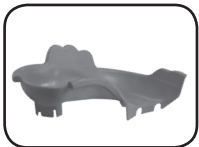
F. One track support tube



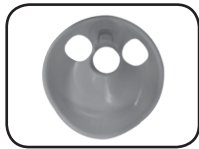
G. One curved lower stair track



H. One middle track with spinner



I. One curved upper track



J. One ball basin



K. One monkey



L. One ball ramp



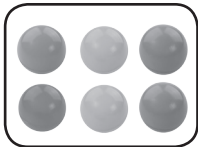
M. One frog ball stopper



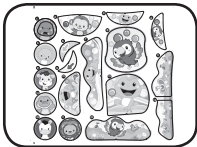
N. One bird ball stopper



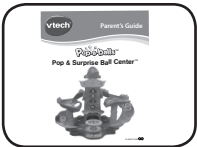
O. One seesaw



P. Six colorful balls



Q. One label sheet



R. One parent's guide

**WARNING:** All packing materials such as tape, plastic sheets, packaging locks, removable tags, cable ties and packaging screws are not part of this toy, and should be discarded for your child's safety.

**NOTE:** Please keep this parent's guide as it contains important information.

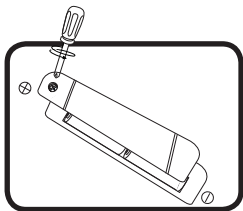
**ATTENTION :** Pour la sécurité de votre enfant, débarrassez-vous de tous les produits d'emballage tels que rubans adhésifs, feuilles de plastique, attaches, étiquettes et vis d'emballage. Ils ne font pas partie du jouet.

**NOTE :** Il est conseillé de conserver ce guide des parents car il comporte des informations importantes.

# GETTING STARTED

## BATTERY INSTALLATION

1. Make sure the unit is turned **OFF**.
2. Locate the battery cover on the back of the unit. Use a screwdriver to loosen the screw.
3. Install 2 new AA (LR6/AM-3) batteries following the diagram inside the battery box. (The use of new alkaline batteries is recommended for maximum performance.)
4. Replace the battery cover and tighten the screw to secure.



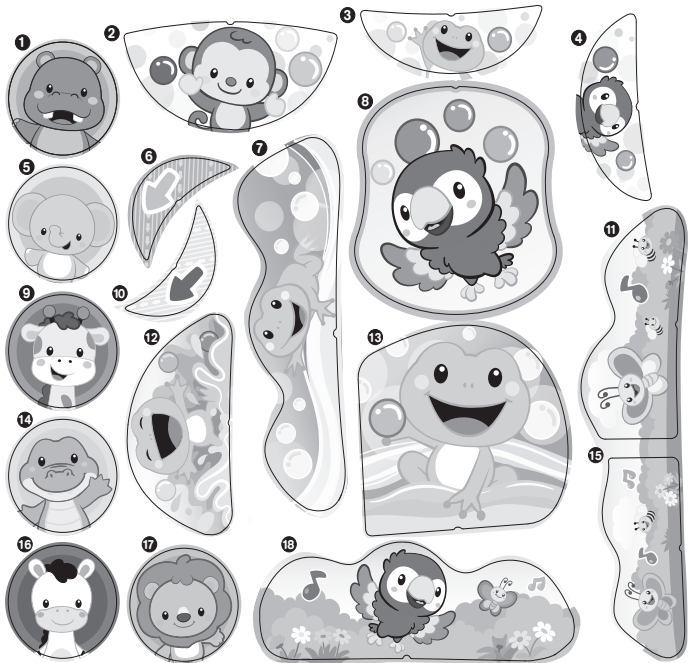
## BATTERY NOTICE

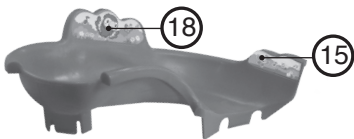
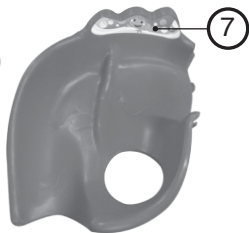
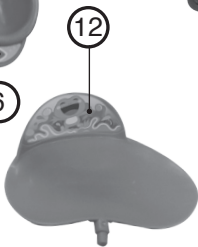
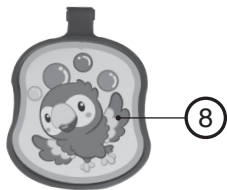
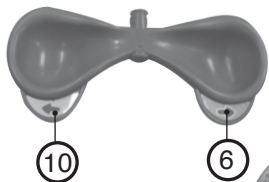
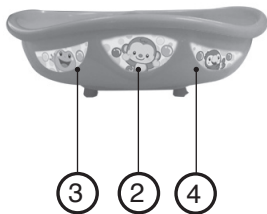
- Use new alkaline batteries for maximum performance.
- Use only batteries of the same or equivalent type as recommended.
- Do not mix different types of batteries: alkaline, standard (carbon-zinc) or rechargeable, or new and used batteries.
- Do not use damaged batteries.
- Insert batteries with the correct polarity.
- Do not short-circuit the battery terminals.
- Remove exhausted batteries from the toy.
- Remove batteries during long periods of non-use.
- Do not dispose of batteries in fire.
- Do not charge non-rechargeable batteries.
- Remove rechargeable batteries from the toy before charging (if removable).
- Rechargeable batteries are only to be charged under adult supervision.

With the **Pop-a-Balls™ Pop & Surprise Ball Center™**, safety comes first. To ensure your child's safety, adult assembly is required. Please carefully follow the assembly instructions below and make sure the final assembly is correct. Adult supervision is recommended.

# LABEL INSTRUCTIONS

Please securely adhere the labels to the playset as indicated below.

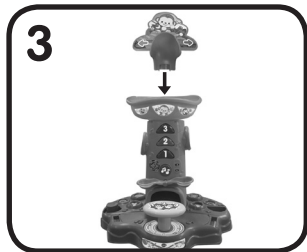
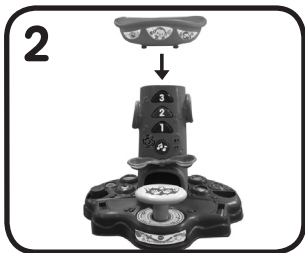
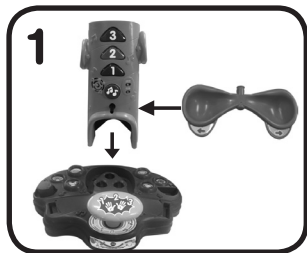
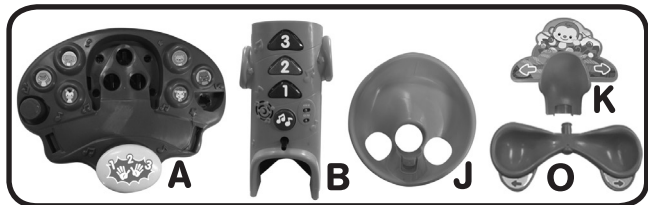




# ASSEMBLY INSTRUCTIONS

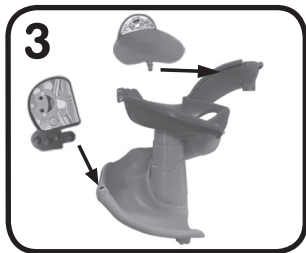
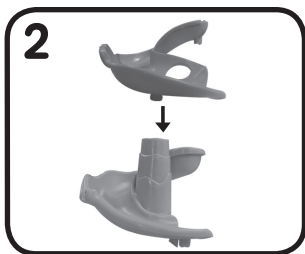
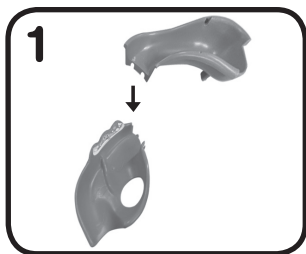
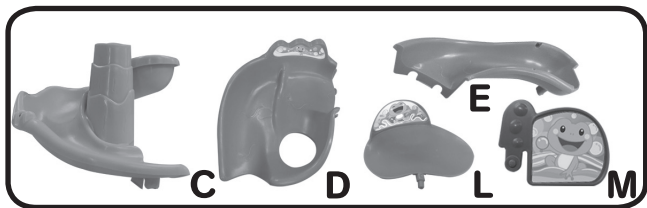
Assemble the parts in the different zones first, then assemble the zones together to complete the assembly.

Step 1: Trunk Assembly A + B + J + K + O

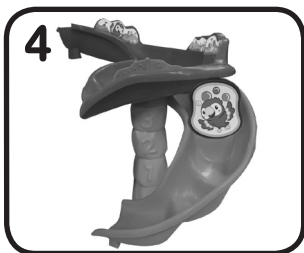
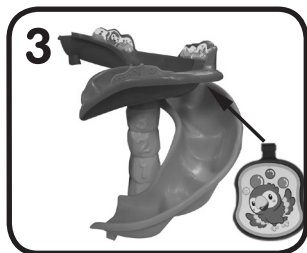
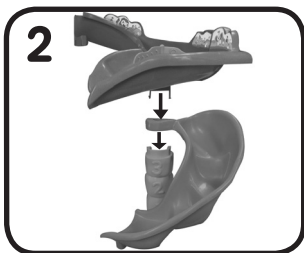
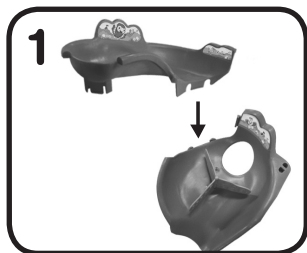
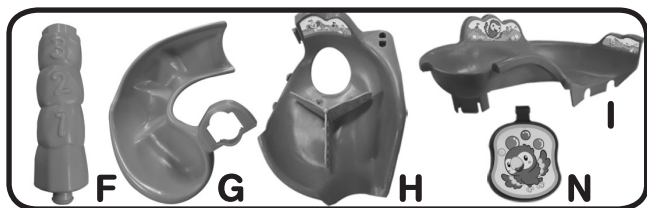




Step 2: Left Track Assembly C + D + E + L + M



Step 3: Right Track Assembly F + G + H + I + N


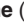



Combine the assembled parts from steps 1-3. If assembled correctly, the finish product should look like the below image.




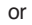
# PRODUCT FEATURES

## 1. On/Off/Volume Control Switch

To turn the unit **ON**, slide the **On/Off/Volume Control Switch** to the **Low Volume** (  ) or **High Volume** (  ) position. To turn the unit **OFF**, slide the **On/Off/Volume Control Switch** to the **OFF** (  ) position.



## 2. Mode Selector Switch

Slide the **Mode Selector Switch** to the **Learning Mode** (  ) or the **Music Mode** (  ) position to choose a mode of play.



## 2. Automatic Shut Off

To preserve battery life, the **Pop-a-Balls™ Pop & Surprise Ball Center™** will automatically power down after approximately 50 seconds without input. The unit can be turned on again by pressing any button.

**NOTE:** If the unit powers down while playing, we suggest changing the batteries.

# ACTIVITIES

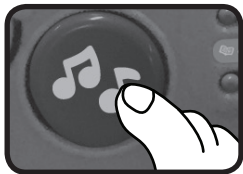
## 1. Big Yellow Button

Press the **Big Yellow Button** to play a variety of silly sounds and phrases. When the balls are loaded into the base of the tower, press the **Big Yellow Button** three times to pop the balls out of the tower. The balls will surprise you by randomly popping out the top or sides of the tower. The lights on the tower will flash with the sounds.



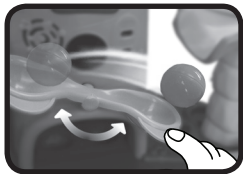
## 2. Music Button

Press the **Music Button** on the tower to learn about colors and animals, and hear entertaining songs in Learning Mode. In Music Mode you will hear melodies and songs. The lights on the tower will flash with the sounds.



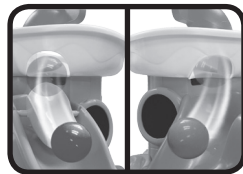
## 3. Seesaw

Press the down on the **Seesaw** to launch the balls onto the ball slides. You will learn about opposites through playful phrases and sounds in Learning Mode. In Music Mode you will hear silly sounds and music. The lights on the tower will flash with the sounds.



## 4. Slide Triggers

Drop the balls through the holes in the ball basin to activate the **Slide Triggers**. You will hear playful phrases, music and sounds. The lights on the tower will flash with the sounds.



# SONG LYRICS

## Song 1

Red, orange and yellow,  
So many colors playing peek-a-boo!  
Green, purple and blue,  
Rolling and popping, Yahoo!

## Song 2

Poppity, poppity, pop!  
Whenever will it stop?  
The balls roll down,  
All around,  
Poppity, poppity, pop!

## Song 3

Learning numbers! Come count with me.  
1, 2, 3, 4, 5,  
6, 7, 8, 9, 10.

## Song 4

Cute little monkey, living in the jungle.  
He swings from tree to tree.  
Let's play in the jungle, just you and me,  
We can twist and bounce and play!

## **MELODY LIST**

1. Aba Daba Honeymoon
2. Cockles and Mussels
3. Shoo Fly, Don't Bother Me
4. Big Rock Candy Mountain
5. Jack Be Nimble
6. Polly Wolly Doodle
7. ABC Tumble Down D
8. Did You Ever See a Lassie?
9. Here We Go Looby Loo
10. Chicken Reel
11. Daring Young Man on the Flying Trapeze
12. Turkey in the Straw
13. Aiken Drum
14. Ta-Ra-Ra Boom De-Ay
15. Goosey, Goosey Gander

## **CARE & MAINTENANCE**

1. Keep the unit clean by wiping it with a slightly damp cloth.
2. Keep the unit out of direct sunlight and away from any direct heat sources.
3. Remove the batteries when the unit is not in use for an extended period of time.
4. Do not drop the unit on a hard surface and do not expose the unit to excess moisture.
5. We recommend playing with this toy on a flat, stable surface.
6. To avoid injuries, keep all body parts away from the three ball exit points.
7. Never aim the tower toward another person.
8. Don't put hands or feet under the big yellow button. Adult supervision is recommended.

# TROUBLESHOOTING

If for some reason the program/activity stops working, please follow these steps:

1. Turn the unit **OFF**.
2. Interrupt the power supply by removing the batteries.
3. Let the unit stand for a few minutes, then replace the batteries.
4. Turn the unit back **ON**. The unit will now be ready to play again.
5. If the unit still does not work, replace with an entire set of new batteries.

If the problem persists, please call our Consumer Services Department at 1-800-521-2010 in the U.S. or 1-877-352-8697 in Canada, or by going to our website at [vtechkids.com](http://vtechkids.com) and filling out our Contact Us form located under the Customer Support link. A service representative will be happy to help you.

## **IMPORTANT NOTE:**

Creating and developing **VTech**<sup>®</sup> products is accompanied by a responsibility that we at **VTech**<sup>®</sup> take very seriously. We make every effort to ensure the accuracy of the information, which forms the value of our products. However, errors sometimes can occur. It is important for you to know that we stand behind our products and encourage you to call our Consumer Services Department at 1-800-521-2010 in the U.S. or 1-877-352-8697 in Canada, or by going to our website at [vtechkids.com](http://vtechkids.com) and filling out our Contact Us form located under the Customer Support link with any problems and/or suggestions that you might have. A service representative will be happy to help you.

## **Note:**

This equipment has been tested and found to comply with the limits for a Class B digital device, pursuant to Part 15 of the FCC Rules. These limits are designed to provide reasonable protection against harmful interference in a residential installation. This equipment generates, uses and can radiate radio frequency energy and, if not



installed and used in accordance with the instructions, may cause harmful interference to radio communications. However, there is no guarantee that interference will not occur in a particular installation. If this equipment does cause harmful interference to radio or television reception, which can be determined by turning the equipment off and on, the user is encouraged to try to correct the interference by one or more of the following measures:

- Reorient or relocate the receiving antenna.
- Increase the separation between the equipment and receiver.
- Connect the equipment into an outlet on a circuit different from that to which the receiver is connected.
- Consult the dealer or an experienced radio/TV technician for help.

THIS DEVICE COMPLIES WITH PART 15 OF THE FCC RULES. OPERATION IS SUBJECT TO THE FOLLOWING TWO CONDITIONS: (1) THIS DEVICE MAY NOT CAUSE HARMFUL INTERFERENCE, AND (2) THIS DEVICE MUST ACCEPT ANY INTERFERENCE RECEIVED, INCLUDING INTERFERENCE THAT MAY CAUSE UNDESIRE OPERATION.

*CAN ICES-3 (B)/NMB-3(B)*

**Caution:** Changes or modifications not expressly approved by the party responsible for compliance could void the user's authority to operate the equipment.

**Visit our website for more  
information about our products,  
downloads, resources and more.**

***vtechkids.com***

Read our complete warranty policy online at  
*vtechkids.com/warranty*

